

Burning, stinging, grittiness, watering, itching soreness, tired eyes – these may be Dry or Allergy Eye symptoms

Merton Beck Opticians of Widnes host a specialist Dry Eye Clinic.

This is provided by Mr Andrew D Price FBDO(Hons)CL MBCLA COA.

Mr Price is holder of the advanced diploma in contact lens practice, an educator in dry eye and contact lens practice, having presented internationally. He also has published clinical trials and authored numerous clinical articles, in addition to all of this he really likes helping patients!

Dry Eye Symptoms



- Dryness, grittiness or scratchiness
- Contact lens discomfort
- Redness
- Fluctuating vision
- Soreness or irritation
- Burning
- Excessive tearing
- Eye fatigue
- Light sensitivity

This specialist private fee-paying dry eye clinic exists separately from the Community Urgent Eyecare Service (CUES) which provides urgent assessment, treatment or referral for sudden onset eye problems such as flashes, floaters, vision loss or minor eye injuries and is also separate from a conventional NHS funded sight-test.

Dry/Watery or Allergy Eyes – help is at hand!

At **Merton Beck Opticians** we host a dedicated specialist clinic to evaluate your dry/watery or allergy eye. Effective treatment plans now offer help to the vast majority of patients with these conditions.

FOR FURTHER DETAILS
PLEASE EMAIL
patients@adp-eyecare.co.uk



What is causing the symptoms?

There is more than one form of Dry/Watery or Allergy Eye; in Dry Eye there may be an insufficiency of quantity of tears, a reduction in the quality of tears or a combination of both. Recent research has shown the quality of tears to be the most common factor.

Factors that influence your tears

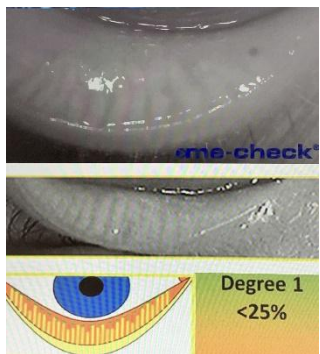
Influences can be:

- Diseases such as Rheumatoid Arthritis and Diabetes
- Hormonal imbalances
- Skin conditions
- Medications
- Increasing age
- Eye/lid infection/inflammation/allergy

Many patients have tried, without success, to address their Dry/Watery or Allergy Eye symptoms for many years. Probably trying some of the many drops, either prescribed or off the shelf. In many cases these have given little or no relief.

Following a specialist exam and treatment around 95% of patients report a significant improvement or disappearance of the problem altogether.

Mr Andrew D Price
FBDO(Hons)CL
MBCLA COA



Imaging of meibomian glands – these are vital to healthy tears

What are the symptoms?

The symptoms can be varied in nature and degree, they can occur more in some environments and when doing certain tasks, interestingly many patients don't relate these symptoms to dryness/allergy.

Common symptoms can include:

- Burning/stinging/grittiness
- Itching
- Light sensitivity
- Eye redness
- Variable vision/eye tiredness
- Contact lens discomfort
- Excessive watery eyes!

Sometimes these symptoms only occur, or are worse, in warm, dry, air-conditioned environments or near potential allergy sources.

Certain tasks such as reading, using a computer or driving can also exacerbate the problems

If these symptoms sound familiar, we can probably help

How can we help?

Please express your interest in a Dry Eye/Allergy Eye Assessment so we can arrange the specific appointment(s) required, this is not normally funded by the NHS so a private fee will be charged.

We will carry out a detailed assessment of Dry/Allergy Eye, involving some of, if not more than, the following steps:

- Health and medication history
- Symptoms/Past Dry/Allergy Eye treatments
- Tear quantity/quality assessments
- Microscope examination of the front of the eye
- Microscope examination of eye lids.

Following that

At end of the of the Dry/Allergy Eye Assessment we will discuss our findings and suggest a treatment plan with you. We will instruct you fully on how to obtain the best benefit on use of therapy you can do at home and/or discuss optional specialist in-practice treatments, then arrange a follow-up visit to assess improvement.

Your next step:

For further free of charge detailed information email patients@adp-eyecare.co.uk